

T.16N.,R.64W.,6th P.M.
1/4 Corner S.16/S.21

RECEIVED
LARAMIE COUNTY
CHEYENNE, WY.

'93 SEP 3 AM 10 29

CERTIFIED LAND CORNER RECORDATION

126087

DESCRIPTION OF CORNER EVIDENCE FOUND, AND ORIGINAL RECORD (If known)

Original Survey: Alfred M. Rodgers, U.S. Deputy Surveyor, July 1871

Record: 40.03 Chains Set a quartz boulder 16 x 6 x 5 for 1/4 Sec. Cor

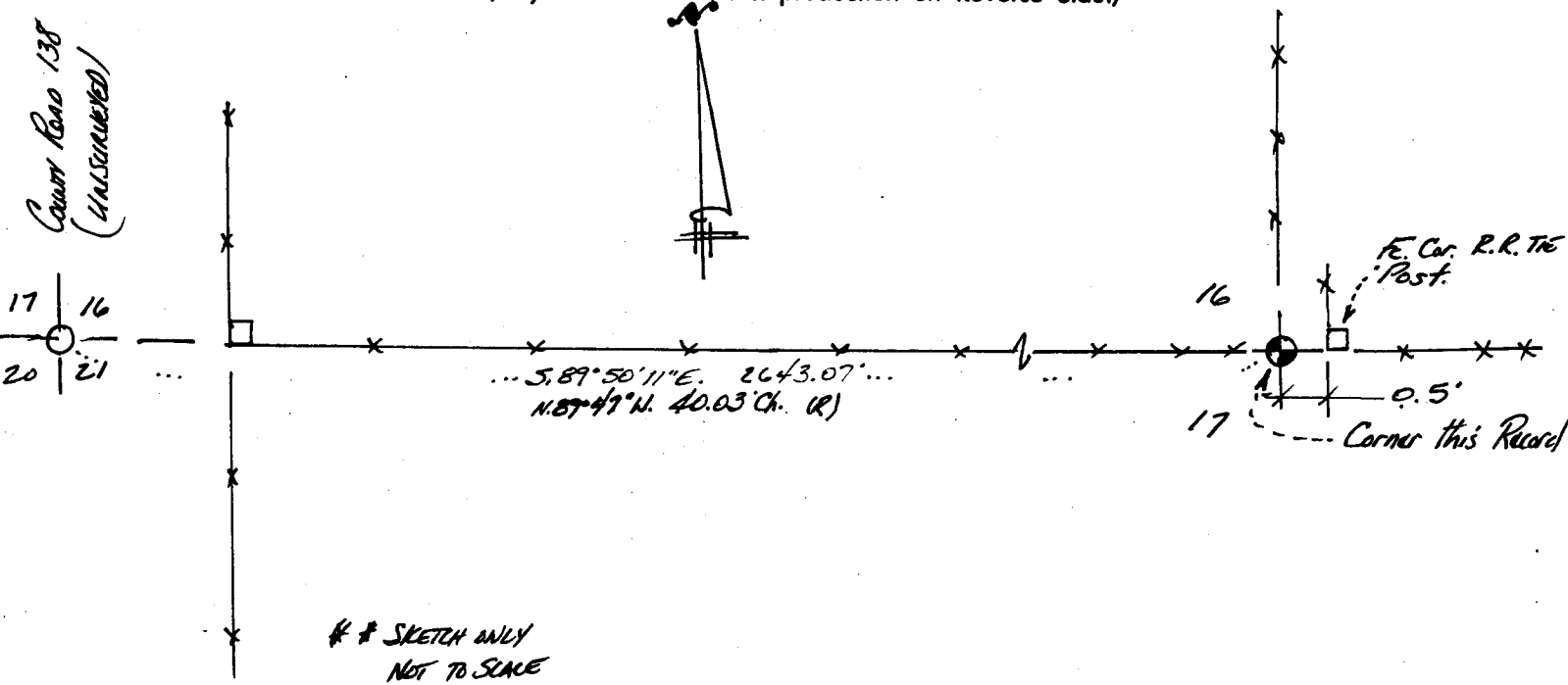
Found: At the base of a 4 way fence intersection a loose set 11 x 5 x 5 quartz stone marked 1/4 on north face.

DESCRIPTION OF MONUMENT AND ACCESSORIES ESTABLISHED TO PERPETUATE THE ORIGINAL LOCATION OF THIS CORNER:

Set: No.5 x 24" rebar with 2" aluminum cap marked
Buried original stone as a memorial alongside and west of set monument.

555
776N 264W
1/4 S16
S21
1993
LS2927

SKETCH, WITH COURSE AND DISTANCE TO ADJACENT CORNER IF DETERMINED IN THIS SURVEY.
(May Sketch or Paste Reproduction on Reverse Side.)

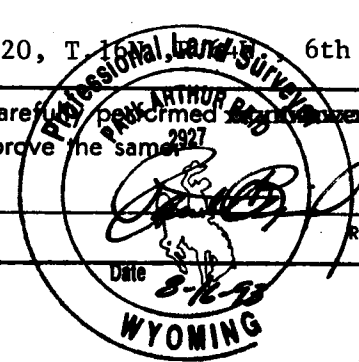


SKETCH ONLY
NOT TO SCALE

Basis of Bearings: Solar Observation at the NW Corner Section 20, T. 16N., R. 64W., 6th P.M.

I, Paul A. Reid certify that I have carefully examined the work done on the diagrammed corner as reported on this recordation form and approve the same.

Signature of Surveyor _____ Registration No. 2927



STATE OF WYOMING,
Office of Clerk and Recorder,
County of _____

This "corner record" was filed for record on the _____ day of _____, 19____, was noted on the cross-index plat and is assigned page No. _____, in book No. _____.

Cross Index No.	County Official		
	N11	T. 16N.	R. 64W., 6th P.M.
_____	_____	_____	Mer.
_____	_____	_____	Mer.
_____	_____	_____	Mer.
_____	_____	_____	Mer.
_____	_____	_____	Mer.
_____	_____	_____	Mer.
_____	_____	_____	Mer.

1/4 corner S.16
S.21